

RESOLUTION NO. 19/20-28

**RESOLUTION OF THE GOVERNING BOARD OF THE
MT. DIABLO UNIFIED SCHOOL DISTRICT RECOMMENDING
THAT THE CONTRA COSTA COUNTY COMMITTEE ON SCHOOL DISTRICT
ORGANIZATION APPROVE AND ESTABLISH TRUSTEE AREAS
FROM WHICH THE MT. DIABLO UNIFIED SCHOOL DISTRICT
TRUSTEES WILL BE ELECTED
IN A BY-TRUSTEE AREA ELECTION PROCESS**

WHEREAS, The Mt. Diablo Unified School District (“District”) currently uses an at-large system of electing members of its Board of Education; and

WHEREAS, At-large electoral systems such as the Districts are subject to challenge under the California Voting Rights Act of 2001, codified at sections 14025-14032 of the California Elections Code (“CVRA”); and

WHEREAS, By-trustee area electoral systems are less vulnerable to challenge under the CVRA; and

WHEREAS, In a by-trustee area system of election, candidates for the District’s Governing Board of Trustees (“Board”) must reside within a specific geographic subarea of the District called a “trustee area” and candidates are elected only by the voters of that trustee area; and

WHEREAS, One method of transitioning from an at-large electoral system to a by trustee area electoral system is for the school district board of education to petition the local county committee on school district organization by resolution to initiate the transition under California Education Code section 5019(c)(1); and

WHEREAS, the Contra Costa County Committee on School District Organization (“Committee”) has indicated that it will initiate this process on behalf of the District at the District’s request, and will consider any recommendation on specific trustee areas made by the District; and

WHEREAS, District held two public hearings on June 10, 2019 and June 24, 2019 to receive public input on drafting trustee area map scenarios (“Scenarios”) and thereafter, District consultants created three (3) draft map Scenarios that were circulated for public review at community forums held on August 21, 22, and 29, 2019, and created three (3) more draft map Scenarios for public review at a community forum on September 11, 2019; and online on the District’s website from August 5, 2019 to the present date; and

WHEREAS, Pursuant to Elections Code section 10010, the District held three properly noticed public hearings regarding the proposed trustee area Scenarios on September 23, 2019 and October 14 and 28, 2019; and

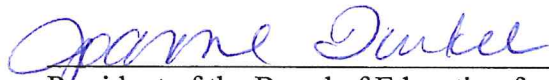
WHEREAS, the Board has considered all public input and comment on the Scenarios; and

WHEREAS, the Board has adopted Scenario Purple A and hereby recommends Scenario Purple A to the Committee for its consideration based upon the findings, analysis and recommendations contained in the report attached hereto and incorporated herein as Exhibits A and B, respectively; and

NOW THEREFORE, be it resolved by the Board of Education of the Mt. Diablo Unified School District as follows:

1. That the above recitals are true and correct.
2. That the Board has adopted Scenario Purple A and recommends Scenario Purple to the Committee for consideration and adoption.
3. That the Superintendent and/or his designee take all actions necessary to notify the Committee of the Board's determination forthwith and provide whatever assistance may be required by the Committee to complete the process.


ADOPTED, SIGNED AND APPROVED on October 28, 2019.



President of the Board of Education for the
Mt. Diablo Unified School District

I, Robert A. Martinez, Secretary of the Board of Education of the Mt. Diablo Unified School District, do hereby certify that the foregoing Resolution was adopted by the Board of Education of said District at a meeting of said Board held on October 28, 2019, and that it was so adopted by the following vote:

AYES: 5
NOES: 0
ABSTAIN: 0
ABSENT: 0



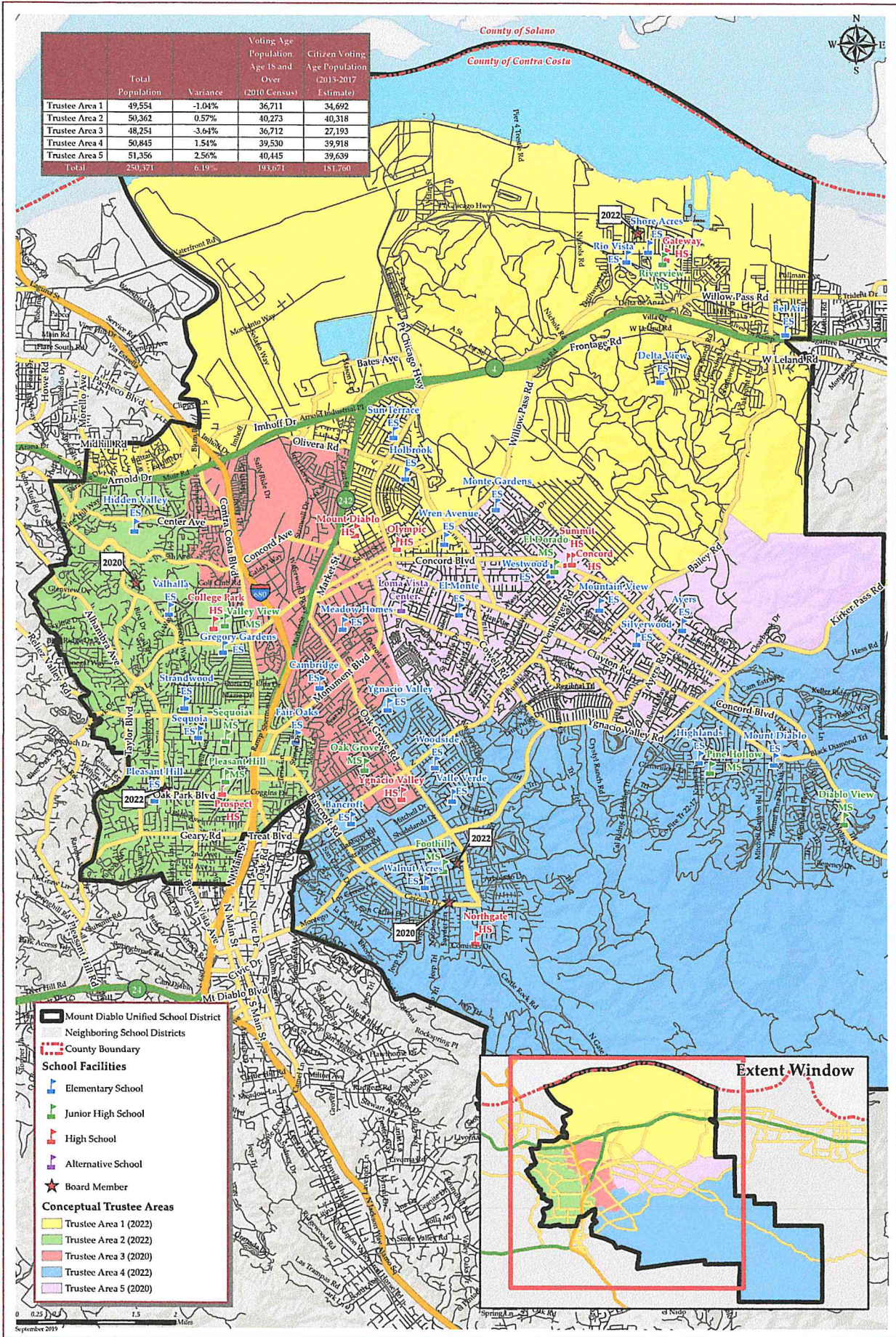
Secretary of the Board of Education of the
Mt. Diablo Unified School District

EXHIBIT "A"

APPROVED TRUSTEE AREA MAP

MT DIABLO UNIFIED SCHOOL DISTRICT CONCEPTUAL TRUSTEE AREAS - SCENARIO PURPLE A

	Total Population	Variance	Voting Age Population Age 18 and Over (2010 Census)	Citizen Voting Age Population (2013-2017 Estimate)
Trustee Area 1	49,554	-1.04%	36,711	34,692
Trustee Area 2	50,362	0.57%	40,273	40,318
Trustee Area 3	48,254	-3.64%	36,712	27,193
Trustee Area 4	50,845	1.54%	39,530	39,918
Trustee Area 5	51,356	2.56%	40,445	39,639
Total	250,371	6.19%	193,671	181,760



MT DIABLO UNIFIED SCHOOL DISTRICT
CONCEPTUAL TRUSTEE AREAS - SCENARIO PURPLE A

Total Population (2010 Census)						
	Trustee Area 1	Trustee Area 2	Trustee Area 3	Trustee Area 4	Trustee Area 5	Variance
Population	49,554	50,362	48,254	50,845	51,356	
Population Variance	-520	288	-1,820	771	1,282	6.19%
Hispanic/Latino	18,739	6,053	21,562	4,779	10,157	
White	37.82%	12.02%	44.68%	9.40%	19.78%	
Black/	17,367	35,529	16,939	36,539	31,086	
African American	35.05%	70.55%	35.10%	71.86%	60.53%	
American Indian/ Alaska Native	3,901	997	2,048	739	1,332	
Asian	7.87%	1.98%	4.24%	1.45%	2.59%	
Native Hawaiian/ Other Pacific Islander	178	118	138	116	159	
Other	0.36%	0.23%	0.29%	0.23%	0.31%	
Two or More Races	7,078	5,452	5,589	6,501	6,092	
	14.28%	10.83%	11.58%	12.79%	11.86%	
	365	80	353	101	215	
	0.74%	0.16%	0.73%	0.20%	0.42%	
	133	91	108	135	137	
	0.27%	0.18%	0.22%	0.27%	0.27%	
	1,793	2,042	1,517	1,934	2,178	
	3.62%	4.05%	3.14%	3.80%	4.24%	

Population 18 and Over (2010 Census)						
	Trustee Area 1	Trustee Area 2	Trustee Area 3	Trustee Area 4	Trustee Area 5	Variance
Population	36,711	40,273	36,712	39,530	40,445	
Population Variance	-2,023	1,539	-2,022	796	1,711	
Hispanic/Latino	12,082	4,211	14,297	3,244	6,886	
White	32.91%	10.46%	38.94%	8.21%	17.03%	
Black/	14,656	29,395	14,691	29,354	25,908	
African American	39.92%	72.99%	40.02%	74.26%	64.06%	
American Indian/ Alaska Native	2,794	741	1,565	596	1,026	
Asian	7.61%	1.84%	4.26%	1.51%	2.54%	
Native Hawaiian/ Other Pacific Islander	153	105	113	83	150	
Other	0.42%	0.26%	0.31%	0.21%	0.28%	
Two or More Races	5,636	4,604	4,771	5,161	4,997	
	15.35%	11.43%	13.00%	13.06%	12.36%	
	256	64	245	83	162	
	0.70%	0.16%	0.67%	0.21%	0.40%	
	94	64	73	81	93	
	0.26%	0.16%	0.20%	0.20%	0.23%	
	1,040	1,089	957	928	1,243	
	2.83%	2.70%	2.61%	2.35%	3.07%	

Citizens by Voting Age Population Estimate (2013-2017)						
	Trustee Area 1	Trustee Area 2	Trustee Area 3	Trustee Area 4	Trustee Area 5	Variance
Population	34,692	40,318	27,193	39,918	39,639	
Population Variance	-1,660	3,966	-9,159	3,566	3,287	
Hispanic/Latino	-4,575%	10.91%	-25.20%	9.81%	9.04%	
White	9,039	3,994	6,777	3,716	6,243	
Black/	26.05%	9.93%	24.92%	9.31%	15.75%	
African American	14,960	29,698	13,569	29,618	25,951	
American Indian/ Alaska Native	43.12%	73.41%	49.90%	74.20%	65.47%	
Asian	3,214	1,076	1,797	531	1,642	
Native Hawaiian/ Other Pacific Islander	9.26%	2.67%	6.61%	1.33%	4.14%	
Other	153	70	58	95	88	
Two or More Races	0.44%	0.17%	0.21%	0.24%	0.22%	
	5,615	3,770	3,695	4,717	4,242	
	16.76%	9.35%	13.59%	11.82%	10.70%	
	255	194	87	70	120	
	0.74%	0.48%	0.32%	0.18%	0.30%	
	0	0	0	0	0	
	0.00%	0.00%	0.00%	0.00%	0.00%	
	1,256	1,606	1,210	1,171	1,353	
	3.62%	3.98%	4.45%	2.93%	3.41%	

ACS Age Groups (2017 Estimates) ¹¹						
	Trustee Area 1	Trustee Area 2	Trustee Area 3	Trustee Area 4	Trustee Area 5	Variance
Under 18 Years Old	24.53%	19.16%	22.88%	21.49%	19.90%	
18-24 Years Old	10.06%	4.58%	9.73%	6.13%	7.87%	
25-34 Years Old	14.82%	14.21%	19.97%	9.81%	14.46%	
35-44 Years Old	28.01%	23.09%	26.72%	27.31%	26.77%	
45-54 Years Old	12.60%	14.74%	10.96%	15.13%	14.32%	
55-64 Years Old	9.98%	17.20%	9.76%	20.13%	16.68%	
Total	100.00%	100.00%	100.00%	100.00%	100.00%	

ACS Renters vs Owners (2017 Estimates) ¹¹						
	Trustee Area 1	Trustee Area 2	Trustee Area 3	Trustee Area 4	Trustee Area 5	Variance
Total Owners	61.13%	62.82%	36.51%	81.54%	68.67%	
Total Renters	38.87%	37.18%	63.49%	18.46%	31.33%	
Total	100.00%	100.00%	100.00%	100.00%	100.00%	

ACS Profile Income by Household (2017 Estimates) ¹¹						
	Trustee Area 1	Trustee Area 2	Trustee Area 3	Trustee Area 4	Trustee Area 5	Variance
Income \$0-25k	18.09%	11.48%	19.21%	7.72%	11.19%	
Income \$25-50k	19.25%	11.17%	24.06%	10.14%	14.60%	
Income \$50-100k	31.16%	24.58%	32.14%	23.10%	31.19%	
Income \$100-150k	16.30%	22.49%	16.05%	18.41%	24.99%	
Income \$150k+	15.19%	30.28%	8.56%	40.63%	18.04%	
Total	100.00%	100.00%	100.00%	100.00%	100.00%	

[1] Based off estimates prepared by the Census Bureau

School Boundaries						
	Trustee Area 1	Trustee Area 2	Trustee Area 3	Trustee Area 4	Trustee Area 5	Variance
Ayers ES		Fair Oaks ES	Bancroft ES	Ayers ES	Ayers ES	
Bel Air ES	Gregory Gardens ES		Cambridge ES	Bancroft ES	El Monte ES	
Delta View ES	Hidden Valley ES		El Monte ES	Highlands ES	Highlands ES	
Halbrook ES	Pleasant Hill ES		Fair Oaks ES	Mt. Diablo ES	Monte Gardens ES	
Hidden Valley ES	Strandwood ES		Gregory Gardens ES	Valle Verde ES	Mountain View ES	
Monte Gardens ES	Valhalla ES		Hidden Valley ES	Walnut Acres ES	Silverwood ES	
Mountain View ES	Pleasant Hill MS		Holbrook ES	Woodside ES	Westwood ES	
Rio Vista ES	Valley View MS		Meadow Homes ES	Foothill MS	Woodside ES	
Shores Acres ES	College Park HS		Sun Terrace ES	Oak Grove MS	Wren Avenue ES	
Sun Terrace ES	Ygnacio Valley HS		Woodside ES	Pine Hollow MS	El Dorado MS	
West Wood ES			Wren Avenue ES	Choice HS	Foothill MS	
Wren Avenue ES			Ygnacio Valley ES	Northgate HS	Oak Grove MS	
El Dorado MS			El Dorado MS	Ygnacio Valley HS	Pine Hollow MS	
Pine Hollow MS			Oak Grove MS		Choice HS	
Riverview MS			Pleasant Hill MS		Concord HS	
Valley View MS			Valley View MS		Mt. Diablo HS	
Choice HS			College Park HS		Northgate HS	
College Park HS			Mt. Diablo HS		Ygnacio Valley HS	
Concord HS			Ygnacio Valley HS			
Mt. Diablo HS						

EXHIBIT "B"

REPORT OF DEMOGRAPHER



**COOPERATIVE
STRATEGIES**

COMPLETE FINANCIAL & DEMOGRAPHIC PLANNING FOR EDUCATION

**MT. DIABLO UNIFIED
SCHOOL DISTRICT**

TRUSTEE AREA SCENARIOS

OCTOBER 28, 2019

EXHIBIT "B"










TRUSTEE AREA PROCESS

Date	Activity
May 13, 2019	Board Meeting: School District Initiates Process to Transition to By-District Elections
June 10, 2019	Board Meeting: First Pre-Map Public Hearing and Presentation
June 24, 2019	Board Meeting: Second Pre-Map Public Hearing Public Hearing on General Waiver Request Board Consideration of General Waiver Request
August 21, 22, 29, and September 11, 2019	Community input meetings at various sites across the School District to review preliminary scenarios and receive public input on maps
September 11, 2019	State Board of Education Approves General Waiver Request
September 23, 2019	Board Meeting: First Public Hearing on Trustee Area Scenarios
October 14, 2019	Board Meeting: Second Public Hearing on Trustee Area Scenarios
October 28, 2019	Board Meeting: Final Public Hearing on Trustee Area Scenarios Board Selection of Trustee Area Map Board Consideration of Change in Election Method
November 2019	County Committee on School District Organization Holds a Public Hearing and Considers Approval of Change in Election Method and Trustee Area Map
November 2019	Cooperative Strategies sends Final Trustee area Map to the County Registrar of Voters
November 2020	First Election Held Utilizing Trustee Areas



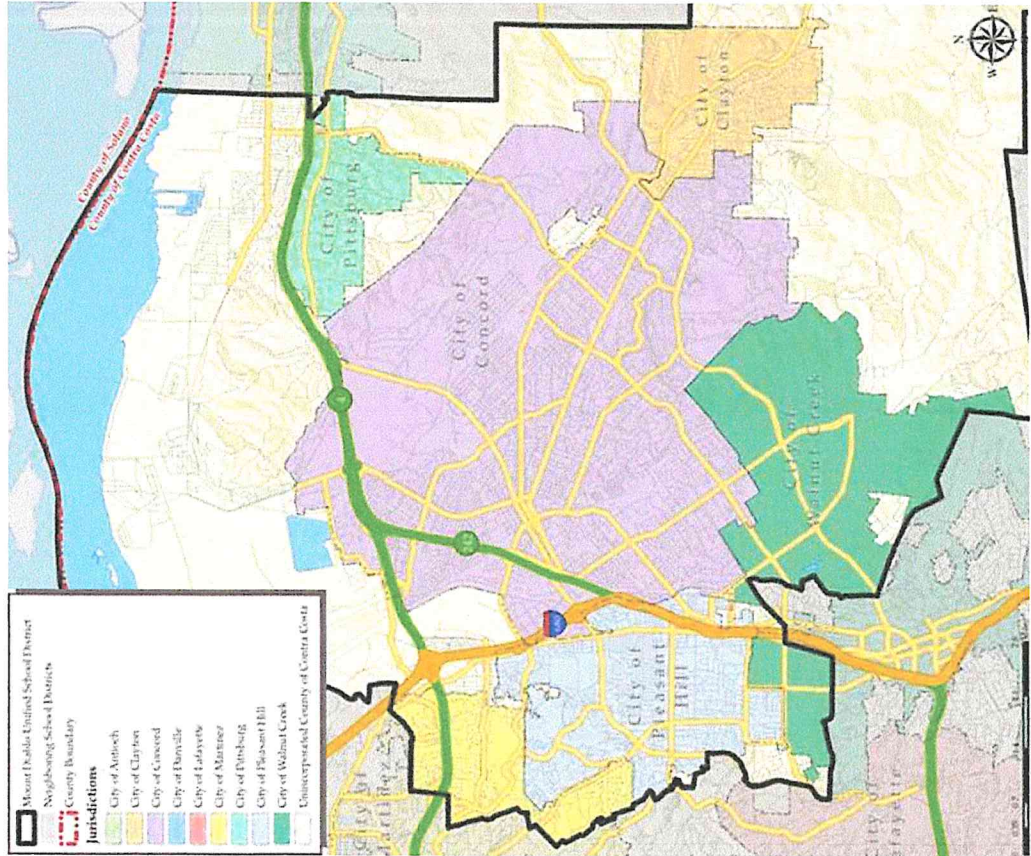
CONSIDERATIONS IN TRUSTEE AREAS

-  Each area shall contain nearly equal number of inhabitants  Follow man-made and natural geographic features, as much as possible
-  Drawn to comply with the Federal Voting Rights Act  Respect incumbency, if possible
-  Compact and contiguous, as much as possible  Other local considerations (i.e., school boundaries, locations of school sites)
-  Respect communities of interest, as much as possible



DISTRICT DEMOGRAPHICS

2010 CENSUS DATA



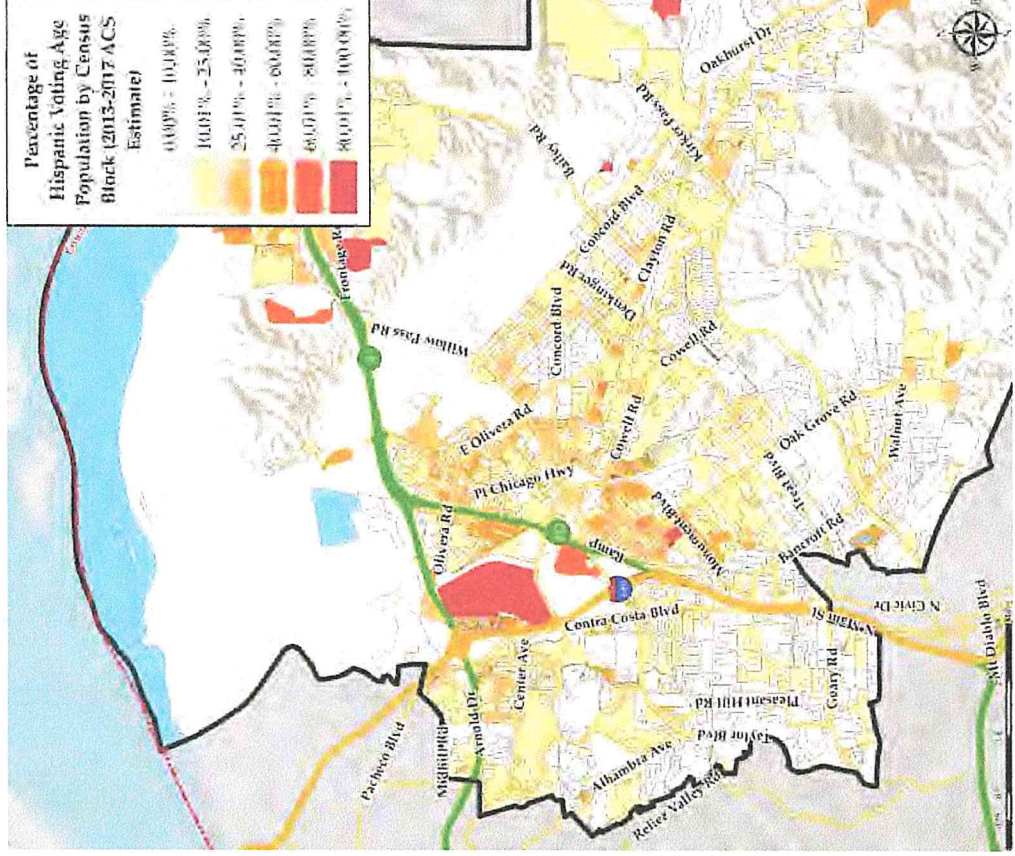
Population	Total Population		Age 18 and over	
	Total	%	Total	%
Hispanic/Latino	61,290	24.48%	40,720	21.03%
White	137,460	54.90%	114,004	58.86%
Black/ African American	9,017	3.60%	6,722	3.47%
American Indian/ Alaska Native	709	0.28%	584	0.30%
Asian	30,712	12.27%	25,169	13.00%
Native Hawaiian/ Pacific Islander	1,114	0.44%	810	0.42%
Other	605	0.24%	405	0.21%
Two or More Races	9,464	3.78%	5,257	2.71%
Total Population	250,371	100.00%	193,671	100.00%



DISTRICT DEMOGRAPHICS

CITIZEN VOTING AGE POPULATION ESTIMATES

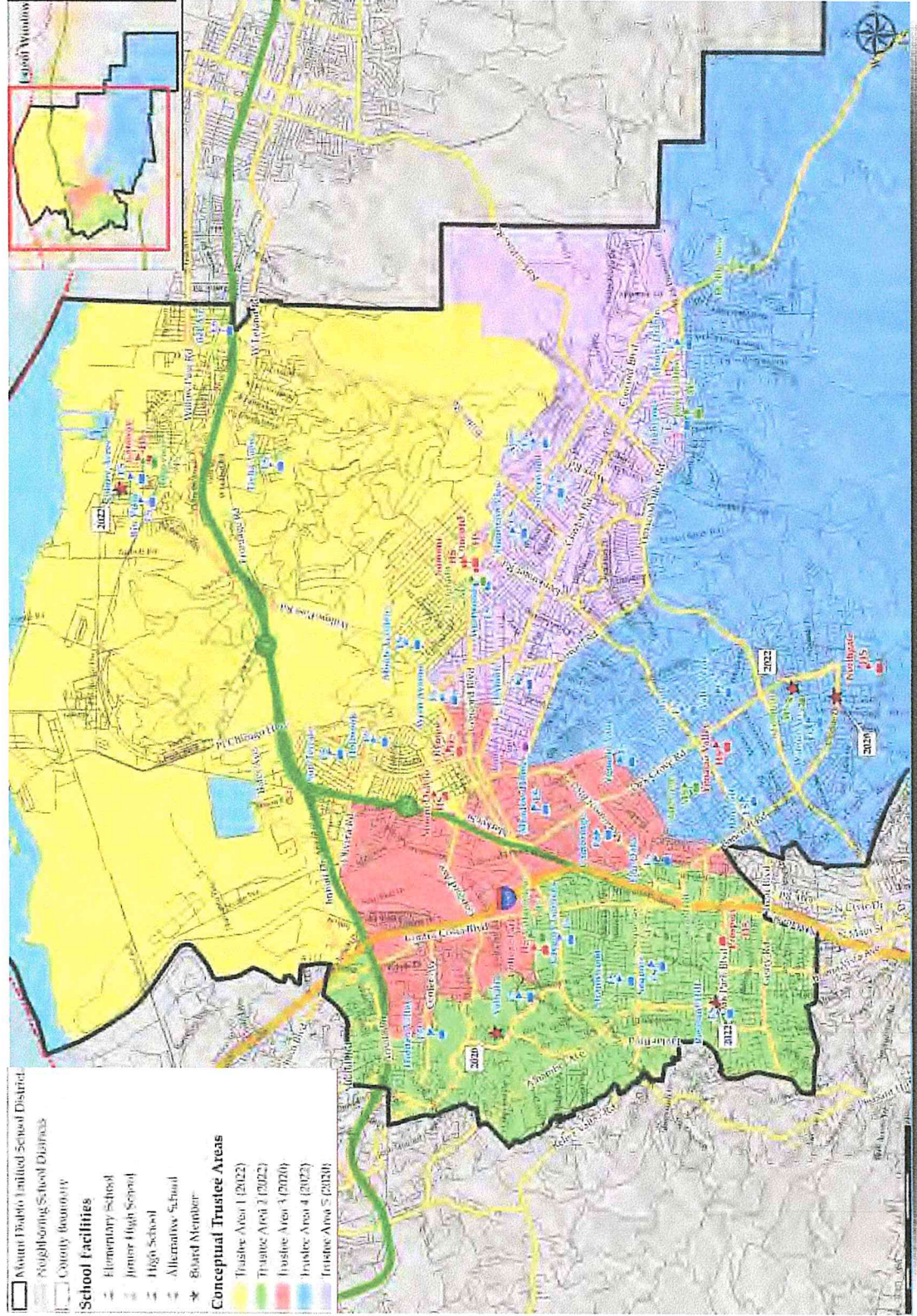
Population	2013-2017 CVAP	
	Total	%
Hispanic/Latino	29,769	16.38%
White	113,706	62.56%
Black/African American	8,260	4.54%
American Indian/ Alaska Native	464	0.26%
Asian	22,239	12.24%
Native Hawaiian/ Pacific Islander	726	0.40%
Two or More Races	6,596	3.63%
Total Population	181,760	100.00%





CONCEPTUAL TRUSTEE AREAS

SCENARIO PINK





DEMOGRAPHICS

SCENARIO PINK

TRUSTEE AREA	Trustee Area 1		Trustee Area 2		Trustee Area 3		Trustee Area 4		Trustee Area 5	
	TP	CVAP	TP	CVAP	TP	CVAP	TP	CVAP	TP	CVAP
Population	49,992	35,728	51,525	40,698	48,364	27,738	50,650	40,179	49,840	37,417
Population Variance	-82	-624	1,451	4,346	-1,710	-8,614	576	3,827	-234	1,065
	-0.16%	-1.72%	2.90%	11.96%	-3.42%	-23.70%	1.15%	10.53%	-0.47%	2.93%
Hispanic/Latino	18,946	9,318	6,437	3,949	21,612	7,087	5,287	4,141	9,008	5,274
	37.90%	26.08%	12.49%	9.70%	44.69%	25.55%	10.44%	10.31%	18.07%	14.10%
White	17,832	15,620	35,983	29,734	16,755	13,728	35,371	28,862	31,519	25,762
	35.67%	43.72%	69.84%	73.06%	34.64%	49.49%	69.83%	71.83%	63.24%	68.85%
Black/African American	3,803	3,062	1,059	1,115	2,152	1,973	755	785	1,248	1,325
	7.61%	8.57%	2.06%	2.74%	4.45%	7.11%	1.49%	1.95%	2.50%	3.54%
American Indian/ Alaska Native	168	163	125	32	150	96	110	81	156	92
	0.34%	0.46%	0.24%	0.08%	0.31%	0.35%	0.22%	0.20%	0.31%	0.25%
Asian	6,944	6,031	5,650	3,837	5,691	3,623	6,893	5,054	5,534	3,694
	13.89%	16.88%	10.97%	9.43%	11.77%	13.06%	13.61%	12.58%	11.10%	9.87%
Native Hawaiian/Other Pacific Islander	375	235	87	236	339	55	158	51	155	149
	0.75%	0.66%	0.17%	0.58%	0.70%	0.20%	0.31%	0.13%	0.31%	0.40%
Other	119	0	114	0	98	0	131	0	143	0
	0.24%	0.00%	0.22%	0.00%	0.20%	0.00%	0.26%	0.00%	0.29%	0.00%
Two or More Races	1,805	1,299	2,070	1,795	1,567	1,176	1,945	1,205	2,077	1,121
	3.61%	3.64%	4.02%	4.41%	3.24%	4.24%	3.84%	3.00%	4.17%	3.00%

*TP: Total Population

**CVAP: Citizen Voting Age Population



ADDITIONAL DATA

SCENARIO PINK

ACS Age Groups (2017 Estimates) ^[1]					
	Trustee Area 1	Trustee Area 2	Trustee Area 3	Trustee Area 4	Trustee Area 5
Under 18 Years Old	24.29%	18.49%	23.08%	20.38%	21.70%
18-24 Years Old	10.01%	7.21%	9.00%	6.37%	6.97%
25-34 Years Old	14.66%	14.64%	18.58%	9.69%	14.75%
35-54 Years Old	27.91%	26.90%	28.43%	27.29%	26.31%
55-64 Years Old	12.67%	14.86%	11.16%	15.83%	13.81%
Over 64 Years Old	10.46%	17.90%	9.76%	20.43%	16.46%
Total	100.00%	100.00%	100.00%	100.00%	100.00%

ACS Renters vs Owners (2017 Estimates) ^[1]					
	Trustee Area 1	Trustee Area 2	Trustee Area 3	Trustee Area 4	Trustee Area 5
Total Owners	63.61%	61.69%	37.65%	80.47%	71.57%
Total Renters	36.39%	38.31%	62.35%	19.53%	28.43%
Total	100.00%	100.00%	100.00%	100.00%	100.00%

ACS Profile Income by Household (2017 Estimates) ^[1]					
	Trustee Area 1	Trustee Area 2	Trustee Area 3	Trustee Area 4	Trustee Area 5
Income \$0-25k	18.08%	12.08%	17.33%	7.12%	11.48%
Income \$25-50k	18.33%	13.54%	20.85%	10.93%	13.92%
Income \$50-100k	30.82%	24.21%	33.30%	23.61%	29.57%
Income \$100-150k	17.38%	22.08%	18.06%	17.98%	24.68%
Income \$150k+	15.38%	28.10%	10.45%	40.35%	20.36%
Total	100.00%	100.00%	100.00%	100.00%	100.00%

[1] Based off estimates prepared by the Census Bureau



ADDITIONAL DATA

SCENARIO PINK

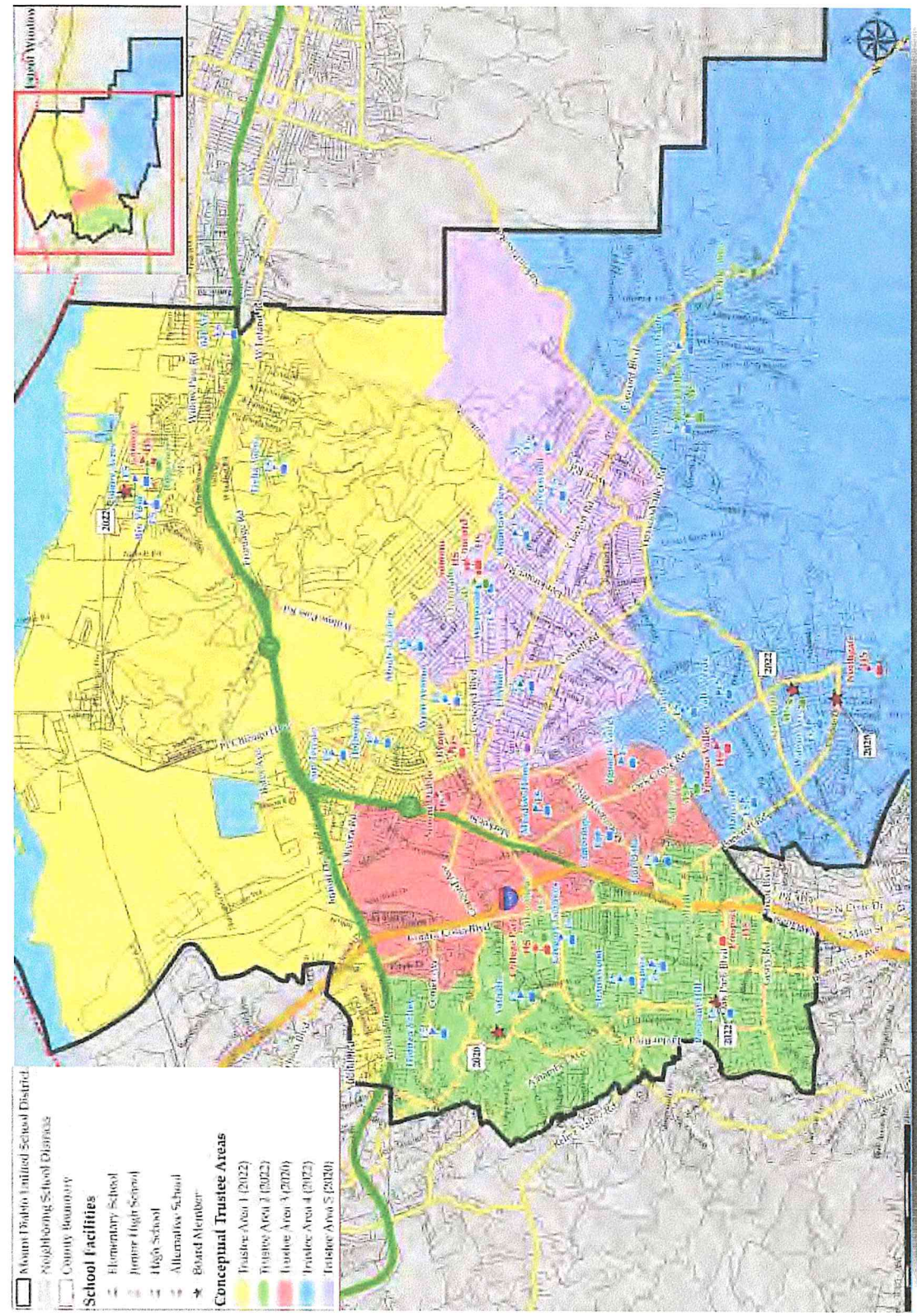
School Boundaries				
Trustee Area 1	Trustee Area 2	Trustee Area 3	Trustee Area 4	Trustee Area 5
Ayers ES	Fair Oaks ES	Cambridge ES	Bancroft ES	Ayers ES
Bel Air ES	Gregory Gardens ES	El Monte ES	El Monte ES	El Monte ES
Delta View ES	Hidden Valley ES	Fair Oaks ES	Fair Oaks ES	Highlands ES
Halbrook ES	Pleasant Hill ES	Gregory Gardens ES	Highlands ES	Mountain View ES
Hidden Valley ES	Strandwood ES	Hidden Valley ES	Mt. Diablo ES	Mt. Diablo ES
Monte Gardens ES	Valhalla ES	Holbrook ES	Valle Verde ES	Silverwood ES
Mountain View ES	Pleasant Hill MS	Meadow Homes ES	Walnut Acres ES	Westwood ES
Rio Vista ES	Valley View MS	Sun Terrace ES	Woodside ES	Wren Avenue ES
Shores Acres ES	College Park HS	Valhalla ES	Ygnacio Valley ES	El Dorado MS
Sun Terrace ES	Ygnacio Valley HS	Wren Avenue ES	El Dorado MS	Foothill MS
Westwood ES		Ygnacio Valley ES	Foothill MS	Pine Hollow MS
Wren Avenue ES		El Dorado MS	Oak Grove MS	Choice HS
El Dorado MS		Oak Grove MS	Pine Hollow MS	Concord HS
Pine Hollow MS		Pleasant Hill MS	Choice HS	Mt. Diablo HS
Riverview MS		Valley View MS	Concord HS	Northgate HS
Valley View MS		College Park HS	Northgate HS	Ygnacio Valley HS
Choice HS		Mt. Diablo HS	Ygnacio Valley HS	
College Park HS		Ygnacio Valley HS		
Concord HS				
Mt. Diablo HS				

School Boundaries



CONCEPTUAL TRUSTEE AREAS

SCENARIO PURPLE





DEMOGRAPHICS

SCENARIO PURPLE

TRUSTEE AREA	Trustee Area 1		Trustee Area 2		Trustee Area 3		Trustee Area 4		Trustee Area 5	
	TP	CVAP	TP	CVAP	TP	CVAP	TP	CVAP	TP	CVAP
Population	48,824	34,238	50,792	40,121	47,429	26,631	51,966	41,129	51,360	39,641
Population Variance	-1,250 -2.50%	-2,114 -5.82%	718 1.43%	3,769 10.37%	-2,645 -5.28%	-9,721 -26.74%	1,892 3.78%	4,777 13.14%	1,286 2.57%	3,289 9.05%
Hispanic/Latino	18,530 37.95%	8,962 26.18%	6,012 11.84%	3,955 9.86%	21,733 45.82%	6,796 25.52%	4,855 9.34%	3,812 9.27%	10,160 19.78%	6,244 15.75%
White	17,017 34.85%	14,593 42.62%	35,289 69.48%	29,381 73.23%	16,676 35.16%	13,253 49.77%	37,391 71.95%	30,527 74.22%	31,087 60.53%	25,952 65.47%
Black/African American	3,877 7.94%	3,208 9.37%	1,026 2.02%	1,098 2.74%	2,028 4.28%	1,755 6.59%	754 1.45%	557 1.35%	1,332 2.59%	1,642 4.14%
American Indian/ Alaska Native	176 0.36%	153 0.45%	119 0.23%	70 0.17%	135 0.28%	58 0.22%	120 0.23%	95 0.23%	159 0.31%	88 0.22%
Asian	6,993 14.32%	5,808 16.96%	6,138 12.08%	3,834 9.56%	4,859 10.24%	3,485 13.09%	6,630 12.76%	4,870 11.84%	6,092 11.86%	4,242 10.70%
Native Hawaiian/Other Pacific Islander	354 0.73%	255 0.74%	77 0.15%	197 0.49%	355 0.75%	84 0.32%	113 0.22%	70 0.17%	215 0.42%	120 0.30%
Other	131 0.27%	0 0.00%	91 0.18%	0 0.00%	105 0.22%	0 0.00%	141 0.27%	0 0.00%	137 0.27%	0 0.00%
Two or More Races	1,746 3.58%	1,259 3.68%	2,040 4.02%	1,586 3.95%	1,538 3.24%	1,200 4.51%	1,962 3.78%	1,198 2.91%	2,178 4.24%	1,353 3.41%

*TP: Total Population

**CVAP: Citizen Voting Age Population



ADDITIONAL DATA

SCENARIO PURPLE

ACS Age Groups (2017 Estimates) [1]					
	Trustee Area 1	Trustee Area 2	Trustee Area 3	Trustee Area 4	Trustee Area 5
Under 18 Years Old	24.57%	18.69%	23.45%	21.58%	20.02%
18-24 Years Old	10.23%	7.55%	8.36%	6.10%	7.64%
25-34 Years Old	14.62%	14.19%	19.57%	9.79%	14.78%
35-54 Years Old	27.82%	27.62%	27.63%	27.16%	26.71%
55-64 Years Old	12.65%	14.79%	11.01%	15.22%	14.29%
Over 64 Years Old	10.11%	17.16%	9.98%	20.15%	16.56%
Total	100.00%	100.00%	100.00%	100.00%	100.00%

ACS Renters vs Owners (2017 Estimates) [1]					
	Trustee Area 1	Trustee Area 2	Trustee Area 3	Trustee Area 4	Trustee Area 5
Total Owners	60.76%	61.20%	38.91%	81.84%	68.76%
Total Renters	39.24%	38.80%	61.09%	18.16%	31.24%
Total	100.00%	100.00%	100.00%	100.00%	100.00%

ACS Profile Income by Household (2017 Estimates) [1]					
	Trustee Area 1	Trustee Area 2	Trustee Area 3	Trustee Area 4	Trustee Area 5
Income \$0-25k	17.90%	11.84%	19.21%	7.38%	11.07%
Income \$25-50k	19.68%	11.23%	24.02%	10.06%	14.89%
Income \$50-100k	30.72%	25.33%	31.68%	23.10%	31.06%
Income \$100-150k	16.13%	22.54%	16.30%	18.69%	25.08%
Income \$150k+	15.57%	29.06%	8.79%	40.77%	17.90%
Total	100.00%	100.00%	100.00%	100.00%	100.00%

[1] Based off estimates prepared by the Census Bureau



ADDITIONAL DATA

SCENARIO PURPLE

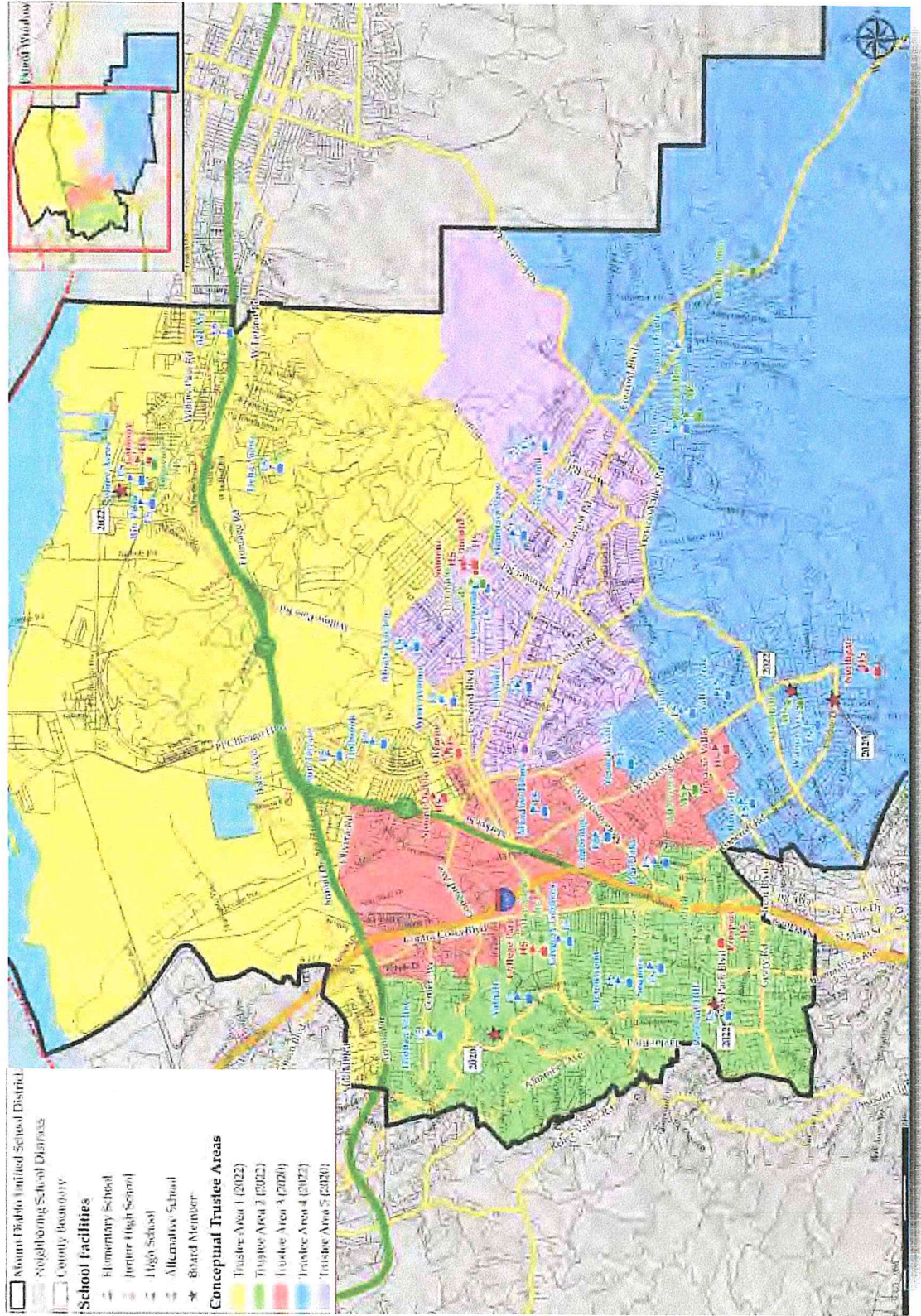
School Boundaries				
Trustee Area 1	Trustee Area 2	Trustee Area 3	Trustee Area 4	Trustee Area 5
Ayers ES	Fair Oaks ES	Cambridge ES	Ayers ES	Ayers ES
Bel Air ES	Gregory Gardens ES	El Monte ES	Bancroft ES	El Monte ES
Delta View ES	Hidden Valley ES	Fair Oaks ES	Highlands ES	Highlands ES
Halbrook ES	Pleasant Hill ES	Gregory Gardens ES	Mt. Diablo ES	Monte Gardens ES
Hidden Valley ES	Strandwood ES	Hidden Valley ES	Valle Verde ES	Mountain View ES
Monte Gardens ES	Valhalla ES	Holbrook ES	Walnut Acres ES	Silverwood ES
Mountain View ES	Pleasant Hill MS	Meadow Homes ES	Woodside ES	Westwood ES
Rio Vista ES	Valley View MS	Sun Terrace ES	Foothill MS	Woodside ES
Shores Acres ES	College Park HS	Wren Avenue ES	Oak Grove MS	Wren Avenue ES
Sun Terrace ES	Ygnacio Valley HS	Ygnacio Valley ES	Pine Hollow MS	El Dorado MS
West Wood ES		El Dorado MS	Choice HS	Foothill MS
Wren Avenue ES		Oak Grove MS	Northgate HS	Oak Grove MS
El Dorado MS		Pleasant Hill MS	Ygnacio Valley HS	Pine Hollow MS
Pine Hollow MS		Valley View MS		Choice HS
Riverview MS		College Park HS		Concord HS
Valley View MS		Mt. Diablo HS		Mt. Diablo HS
Choice HS		Ygnacio Valley HS		Northgate HS
College Park HS				Ygnacio Valley ES
Concord HS				
Mt. Diablo HS				

School Boundaries



CONCEPTUAL TRUSTEE AREAS

SCENARIO PURPLE A





DEMOGRAPHICS

SCENARIO PURPLE A

TRUSTEE AREA	Trustee Area 1		Trustee Area 2		Trustee Area 3		Trustee Area 4		Trustee Area 5	
	TP	CVAP	TP	CVAP	TP	CVAP	TP	CVAP	TP	CVAP
Population	49,554	34,692	50,362	40,318	48,254	27,193	50,845	39,918	51,356	39,639
Population Variance	-520	-1,660	288	3,966	-1,820	-9,159	771	3,566	1,282	3,287
	-1.04%	-4.57%	0.57%	10.91%	-3.64%	-25.20%	1.54%	9.81%	2.56%	9.04%
Hispanic/Latino	18,739	9,039	6,053	3,994	21,562	6,777	4,779	3,716	10,157	6,243
	37.82%	26.05%	12.02%	9.91%	44.68%	24.92%	9.40%	9.31%	19.78%	15.75%
White	17,367	14,960	35,529	29,608	16,939	13,569	36,539	29,618	31,086	25,951
	35.05%	43.12%	70.55%	73.44%	35.10%	49.90%	71.86%	74.20%	60.53%	65.47%
Black/African American	3,901	3,214	997	1,076	2,048	1,797	739	531	1,332	1,642
	7.87%	9.26%	1.98%	2.67%	4.24%	6.61%	1.45%	1.33%	2.59%	4.14%
American Indian/ Alaska Native	178	153	118	70	138	58	116	95	159	88
	0.36%	0.44%	0.23%	0.17%	0.29%	0.21%	0.23%	0.24%	0.31%	0.22%
Asian	7,078	5,815	5,452	3,770	5,589	3,695	6,501	4,717	6,092	4,242
	14.28%	16.76%	10.83%	9.35%	11.58%	13.59%	12.79%	11.82%	11.86%	10.70%
Native Hawaiian/Other Pacific Islander	365	255	80	194	353	87	101	70	215	120
	0.74%	0.74%	0.16%	0.48%	0.73%	0.32%	0.20%	0.18%	0.42%	0.30%
Other	133	0	91	0	108	0	136	0	137	0
	0.27%	0.00%	0.18%	0.00%	0.22%	0.00%	0.27%	0.00%	0.27%	0.00%
Two or More Races	1,793	1,256	2,042	1,606	1,517	1,210	1,934	1,171	2,178	1,353
	3.62%	3.62%	4.05%	3.98%	3.14%	4.45%	3.80%	2.93%	4.24%	3.41%

*TP: Total Population

**CVAP: Citizen Voting Age Population



ADDITIONAL DATA

SCENARIO PURPLE A

ACS Age Groups (2017 Estimates) [1]					
	Trustee Area 1	Trustee Area 2	Trustee Area 3	Trustee Area 4	Trustee Area 5
Under 18 Years Old	24.53%	19.16%	22.88%	21.49%	19.90%
18-24 Years Old	10.06%	6.58%	9.71%	6.13%	7.67%
25-34 Years Old	14.82%	14.21%	19.97%	9.81%	14.66%
35-54 Years Old	28.01%	28.09%	26.72%	27.31%	26.77%
55-64 Years Old	12.60%	14.74%	10.96%	15.13%	14.32%
Over 64 Years Old	9.98%	17.20%	9.76%	20.13%	16.68%
Total	100.00%	100.00%	100.00%	100.00%	100.00%

ACS Renters vs Owners (2017 Estimates) [1]					
	Trustee Area 1	Trustee Area 2	Trustee Area 3	Trustee Area 4	Trustee Area 5
Total Owners	61.13%	62.82%	36.51%	81.54%	68.67%
Total Renters	38.87%	37.18%	63.49%	18.46%	31.33%
Total	100.00%	100.00%	100.00%	100.00%	100.00%

ACS Profile Income by Household (2017 Estimates) [1]					
	Trustee Area 1	Trustee Area 2	Trustee Area 3	Trustee Area 4	Trustee Area 5
Income \$0-25k	18.09%	11.48%	19.21%	7.72%	11.19%
Income \$25-50k	19.25%	11.17%	24.06%	10.14%	14.60%
Income \$50-100k	31.16%	24.58%	32.14%	23.10%	31.19%
Income \$100-150k	16.30%	22.49%	16.05%	18.41%	24.99%
Income \$150k+	15.19%	30.28%	8.56%	40.63%	18.04%
Total	100.00%	100.00%	100.00%	100.00%	100.00%

[1] Based off estimates prepared by the Census Bureau



ADDITIONAL DATA

SCENARIO PURPLE A

School Boundaries				
Trustee Area 1	Trustee Area 2	Trustee Area 3	Trustee Area 4	Trustee Area 5
Ayers ES	Fair Oaks ES	Bancroft ES	Ayers ES	Ayers ES
Bel Air ES	Gregory Gardens ES	Cambridge ES	Bancroft ES	El Monte ES
Delta View ES	Hidden Valley ES	El Monte ES	Highlands ES	Highlands ES
Halbrook ES	Pleasant Hill ES	Fair Oaks ES	Mt. Diablo ES	Monte Gardens ES
Hidden Valley ES	Strandwood ES	Gregory Gardens ES	Valle Verde ES	Mountain View ES
Monte Gardens ES	Valhalla ES	Hidden Valley ES	Walnut Acres ES	Silverwood ES
Mountain View ES	Pleasant Hill MS	Holbrook ES	Woodside ES	Westwood ES
Rio Vista ES	Valley View MS	Meadow Homes ES	Ygnacio Valley ES	Woodside ES
Shores Acres ES	College Park HS	Sun Terrace ES	Foothill MS	Wren Avenue ES
Sun Terrace ES	Ygnacio Valley HS	Woodside ES	Oak Grove MS	El Dorado MS
West Wood ES		Wren Avenue ES	Pine Hollow MS	Foothill MS
Wren Avenue ES		Ygnacio Valley ES	Choice HS	Oak Grove MS
El Dorado MS		El Dorado MS	Northgate HS	Pine Hollow MS
Pine Hollow MS		Oak Grove MS	Ygnacio Valley HS	Choice HS
Riverview MS		Pleasant Hill MS		Concord HS
Valley View MS		Valley View MS		Mt. Diablo HS
Choice HS		College Park HS		Northgate HS
College Park HS		Mt. Diablo HS		Ygnacio Valley HS
Concord HS		Ygnacio Valley HS		
Mt. Diablo HS				

School Boundaries



QUESTIONS

